



# **Wellington Airport Noise Compliance Reporting**

## **September/October/November 2022**

- 1. Noise Enquiries Received and Response**
- 2. Noise Enquiries Graph**
- 3. Curfew Movements Graph**
- 4. Noise (LdN) Compliance Graph**
- 5. Monthly Monitoring Reports from Envirosuite Pty Limited**

## **As reported to the Air Noise Management Committee**

### **12 December 2022**

# Noise Enquiries Summary

Date	Time	Suburb	Query	Source / Action	Category	Comment
5/09/2022		Unknown	Reason for Qantas Flight 163 departing at 12:50am	Reviewed Webtrak. QF163 arrived at 12:50am however had a missed approach due to wind conditions. It then turned over the northern suburbs and landed from the north. Informed complainant.	SIN	via webform
1/10/2022		Tawa	Woken at 1:15 from Qantas Flight arrival within curfew	This flight was disrupted due to ramp congestion at Sydney International Airport. Explained 30 minute disruption allowance in curfew rules for disruption.	CUR	via webform
16/10/2022	3:30pm	Roseneath	Airbus A320 flew over home in Roseneath just after 3pm	Confirmed with Airways NZ that this flight (Air NZ WLG to DUD) was at 2000ft before commencing its westward turn and therefore complies with the Noise Abatement Procedures.	OVR	email
30/10/2022	10:07am	Newlands	Asked how significant the noise was under the flight path in Newlands	Replied that airport does not monitor noise from aircraft in flight, and that this is governed by CAA rules. Complainant also requested information from Airways NZ regarding the number of flights over their house.	OVR	email
17/11/2022		Miramar	Drilling noise from the Miramar South Site causing vibrations noise. Concerned will affect house	Vibrating roller likely cause. Required for compaction of pavement. Work only being undertaken during weekdays (day time only). Discussed with noise consultant. Would have to be within 12 metres of house for vibration to affect it. Informed complainant of construction timeframes and information from noise consultant.	OTH	email
18/11/2022		Miramar	Noise and vibration from construction	Vibrating roller likely culprit. Required for compaction of pavement. Work only during weekdays (day time only). Discussed with noise consultant. Would have to be within 12 metres of house for vibration to affect it. Informed complainant of construction timeframes and information from noise consultant.	OTH	via text and email
30/11/2022	3:35pm	Roseneath	Aircraft flew over populated area of Roseneath 3:30pm	Asked Airways to check compliance with Noise Abatement Procedures.	SIN	WIAL copied into email to Pelorus Air (aircraft operator)

GPU - GPU/APU use

MNT - WIAL maintenance works

ENG - engine testing

SIN - single noisy aircraft movement

CUR - airport movement during curfew hours

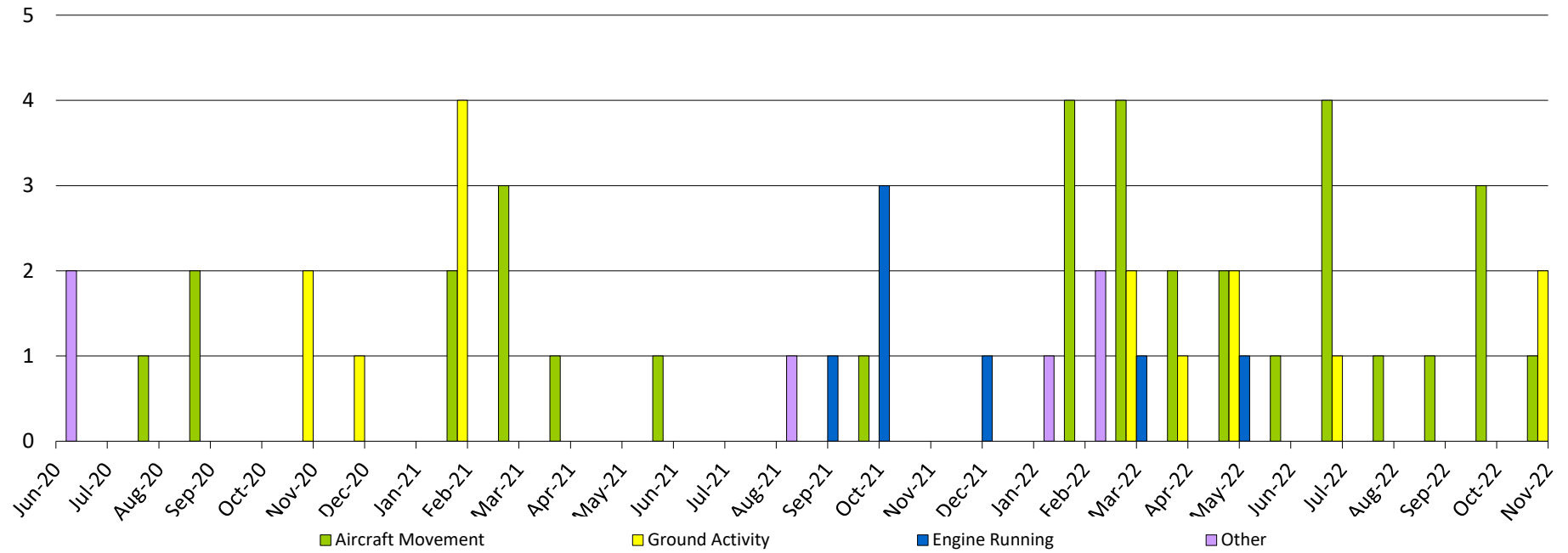
OVR - overflight/holding/circling aircraft

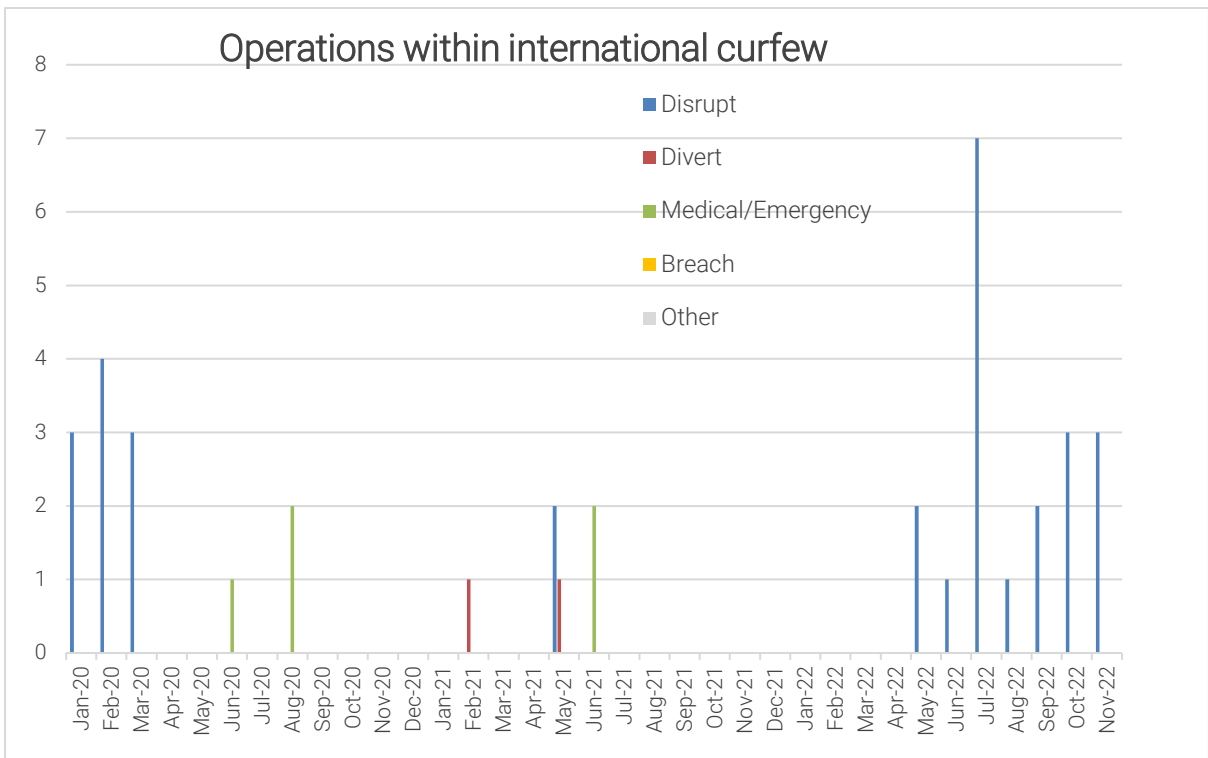
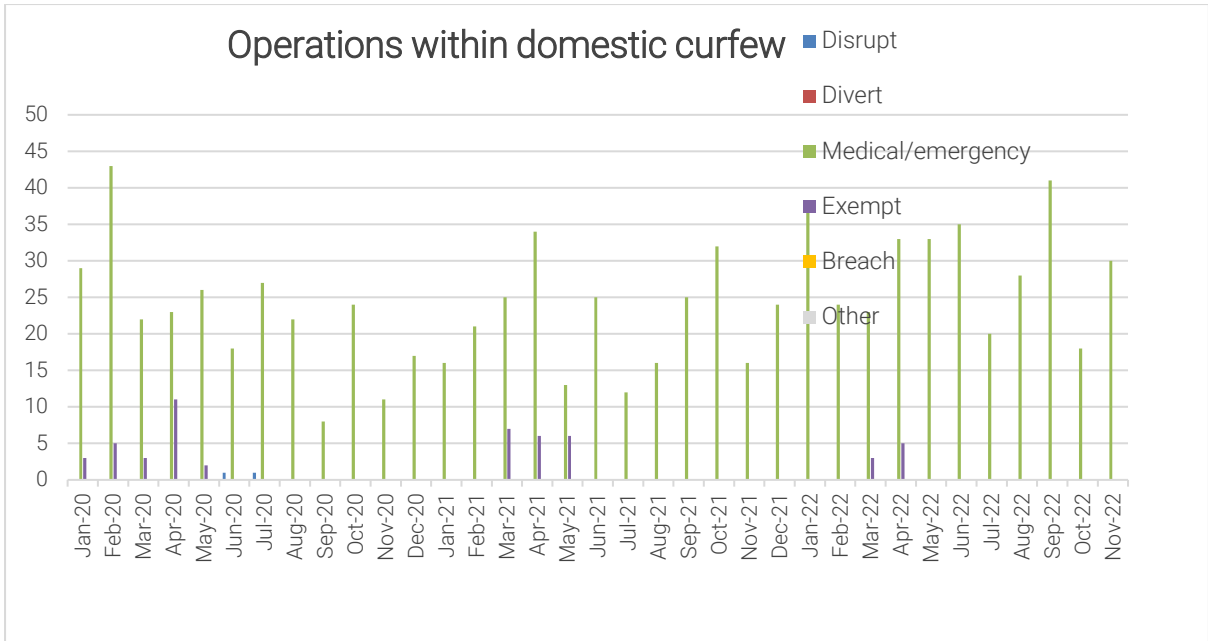
CAA - low flying/safety complaints

QRY - enquiries about rules etc

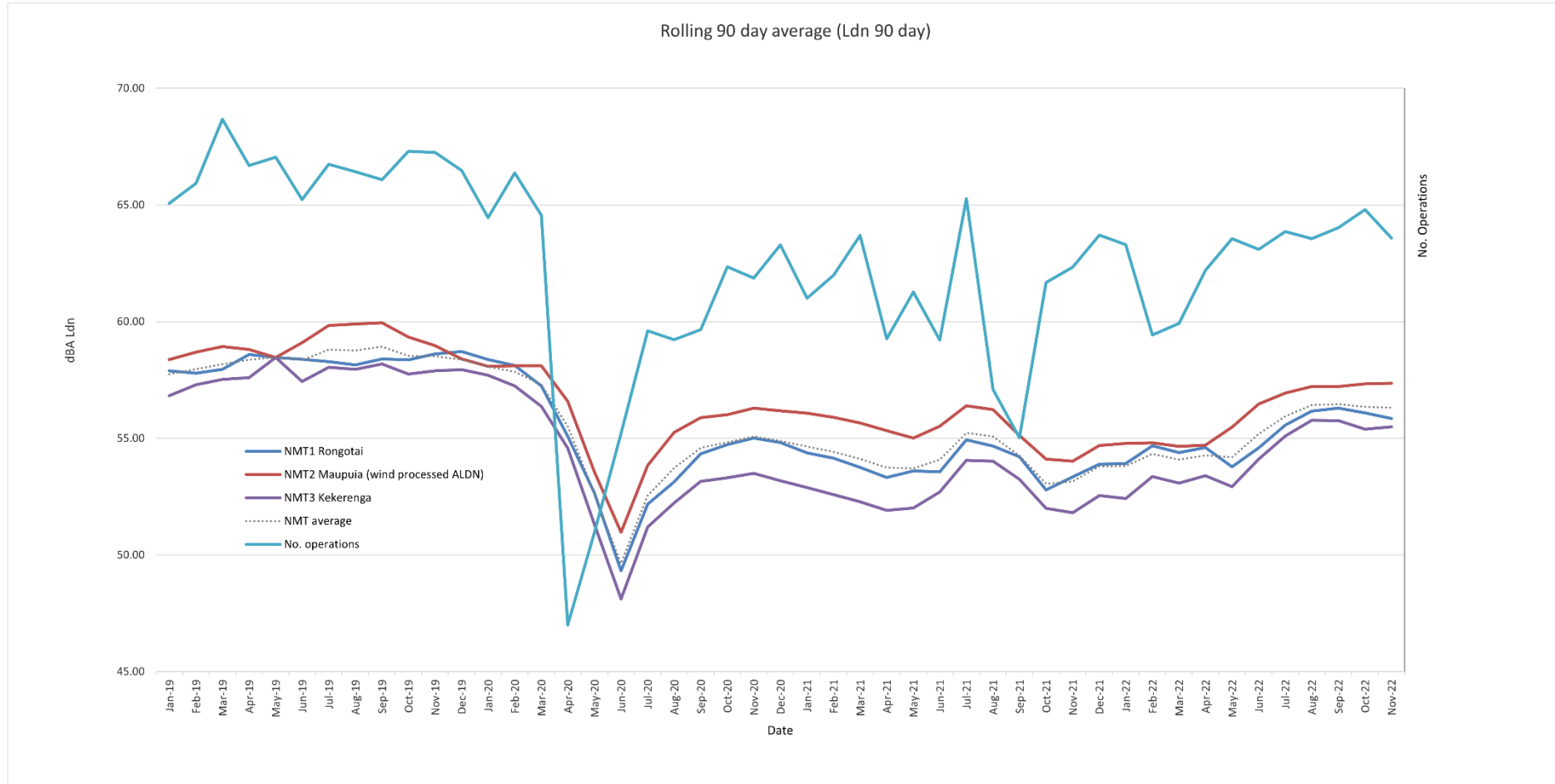
OTH - other feedback

# Noise Enquiries to Nov 2022





# LDN COMPLIANCE GRAPH





Wellington International Airport  
Managed Noise Service  
Monthly Report for Sep 2022

---

**WELLINGTON INTERNATIONAL**  
**AIRPORT LIMITED**

Managed Noise Service

Monthly Report: Sep 2022

Provided By: Envirosuite

Date: 11 October, 2022

Wellington International Airport  
Managed Noise Service  
Monthly Report for Sep 2022

---

**Table of Contents**

<b>SUMMARY</b> .....	<b>3</b>
<b>AIRCRAFT LDN</b> .....	<b>4</b>
<b>AIRCRAFT OPERATIONS</b> .....	<b>5</b>
<b>UNCORRELATED AIRCRAFT</b> .....	<b>7</b>
<b>CALIBRATION REPORT</b> .....	<b>9</b>

Wellington International Airport  
Managed Noise Service  
Monthly Report for Sep 2022

---

## Summary

This report contains the information required by WIAL as part of the Envirosuite Managed Noise Service Agreement. The month of September saw data collected from all three RMTs with following exceptions:

RMT1, RMT2 and RMT3 all missed one hourly record on 25th September .  
RMT1, RMT2 and RMT3 all missed one hourly record on 26th September .



Wellington International Airport  
Managed Noise Service  
Monthly Report for Sep 2022

---

## Aircraft LDN

**Daily LDN Table**  
**Sep 1, 2022 to Sep 30, 2022**

	<b>RMT 1 Rongotai</b>	<b>RMT 2 Maupuia</b>	<b>RMT 3 Kekerenga</b>
01-Sep-22	54.5	58.4	55.1
02-Sep-22	56.3	58.5	56.1
03-Sep-22	56.9	53.7	56.7
04-Sep-22	54.3	58.3	56.1
05-Sep-22	58.3	57.3	54.8
06-Sep-22	57.8	57.1	55.6
07-Sep-22	53.2	56.3	54.2
08-Sep-22	55.6	55.1	55.0
09-Sep-22	57.4	56.7	55.0
10-Sep-22	55.2	57.5	54.7
11-Sep-22	53.3	55.0	55.1
12-Sep-22	54.3	58.5	56.5
13-Sep-22	53.1	59.2	55.3
14-Sep-22	56.2	57.5	54.3
15-Sep-22	53.5	58.4	55.8
16-Sep-22	57.5	57.0	54.7
17-Sep-22	52.9	57.8	55.4
18-Sep-22	54.9	58.0	55.2
19-Sep-22	55.7	59.6	56.6
20-Sep-22	54.5	58.6	55.9
21-Sep-22	56.4	56.7	55.3
22-Sep-22	58.5	55.8	53.5
23-Sep-22	59.1	57.0	55.7
24-Sep-22	56.2	54.1	53.1
25-Sep-22	56.2	53.7	52.5
26-Sep-22	54.6	55.5	53.6
27-Sep-22	52.5	57.5	54.8
28-Sep-22	52.8	58.2	55.6
29-Sep-22	55.0	59.5	56.6
30-Sep-22	58.8	56.0	55.2

Wellington International Airport  
Managed Noise Service  
Monthly Report for Sep 2022

---

## Aircraft Operations

**Operations Analysis**  
**Sep 1, 2022 to Sep 30, 2022**

Operation Type	Day	Night	Total
Arrival	3316	127	3443
Departure	3225	181	3406
<b>Total</b>	<b>6541</b>	<b>308</b>	<b>6849</b>

Jet	Day	Night	Total
A20N	97	102	199
A21N	3	1	4
A320 - Airbus - A320	1744	32	1776
B38M	17	0	17
B738 - Boeing - 737-800	118	18	136
B752 - Boeing - 757-200	22	0	22
C25A	13	0	13
C25B	4	0	4
C510 - CESSNA CITIATION MUSTANG	16	0	16
C560 - Cessna - Citation 5	2	0	2
C680 - CESSNA - 680 Citation Sovereign L2J/M	4	0	4
CL60 - Canadair Bombardier - CL600/610 Challenger	20	2	22
E50P	2	0	2
FA50 - Dassault-Breguet - Falcon 50, Mystere 50 (T-16)	16	1	17
FA7X	2	0	2
GLEX - Bombardier GLOBAL EXPRESS/Sentinel	2	0	2
GLF5 - Gulfstream - Gulfstream 5	8	0	8
GLF6	2	0	2
JPRO	1	0	1
PC24	2	0	2
<b>Total</b>	<b>2095</b>	<b>156</b>	<b>2251</b>

Wellington International Airport  
Managed Noise Service  
Monthly Report for Sep 2022

<b>Turboprop</b>	<b>Day</b>	<b>Night</b>	<b>Total</b>
AT75 - Aerospatiale/Aeritalia - ATR-72-500	24	0	24
AT76 - Aerospatiale/Aeritalia - ATR-72-600	895	34	929
B350 - Beech - Super King Air 350	23	1	24
BE20 - Beech - Super King Air 200, 1300	148	23	171
BE9L - Beech - KingAir90, A90 to E90 (T-44, V-C6), Taurus 90	39	0	39
C130 - Lockheed - Hercules, Spectre	12	0	12
C208 - Cessna - Caravan 1- 208,(Super) Cargomaster, Grand Caravan (U27)	548	42	590
C441 - Cessna - Conquest/Conquest 2 - 441	22	0	22
DH8C - Dehavilland - Dash 8, DHC8 - 300	1943	0	1943
JS31 - British Aerospace (BAe) - BAe-3100 Jetstream 31	17	0	17
JS32 - British Aerospace (BAe) - BAe-3200 Jetstream Super 31	145	22	167
MU2 - Mitsubishi - MU-2, Marquise, Solitaire	4	0	4
PC12 - Pilatus Flugzeugwerke Ag - PC-12	277	20	297
SF34 - Saab - SF-340	11	1	12
SW4 - Fairchild - Metro, Merlin 4	12	0	12
<b>Total</b>	<b>4120</b>	<b>143</b>	<b>4263</b>

<b>Others</b>	<b>Day</b>	<b>Night</b>	<b>Total</b>
BK17	9	1	10
C172 - Cessna - Skyhawk 172/Cutlass/Mescalero	31	0	31
DA40	4	0	4
EC45	1	0	1
GA8	43	0	43
M9	5	0	5
NH90 - NH90 Caiman	9	0	9
P28A - Piper - Cherokee, Archer, Warrior, Cadet, Cruiser (PA-28-140/150/151/160/161/180/181)	25	2	27
P28S	2	0	2
PA34 - Piper - Seneca 2/3	27	0	27
PA38 - Piper - Tomahawk	53	0	53
PA44 - Piper - Seminole, Turbo Seminole	7	0	7
SR22 - Cirrus - SR-22	5	0	5
SW4B	12	0	12
	93	6	99
<b>Total</b>	<b>326</b>	<b>9</b>	<b>335</b>

<b>Category</b>	<b>Day</b>	<b>Night</b>	<b>Total</b>
Jet	2095	156	2251
Turboprop	4120	143	4263
Other	326	9	335
<b>Total</b>	<b>6541</b>	<b>308</b>	<b>6849</b>

Wellington International Airport  
Managed Noise Service  
Monthly Report for Sep 2022

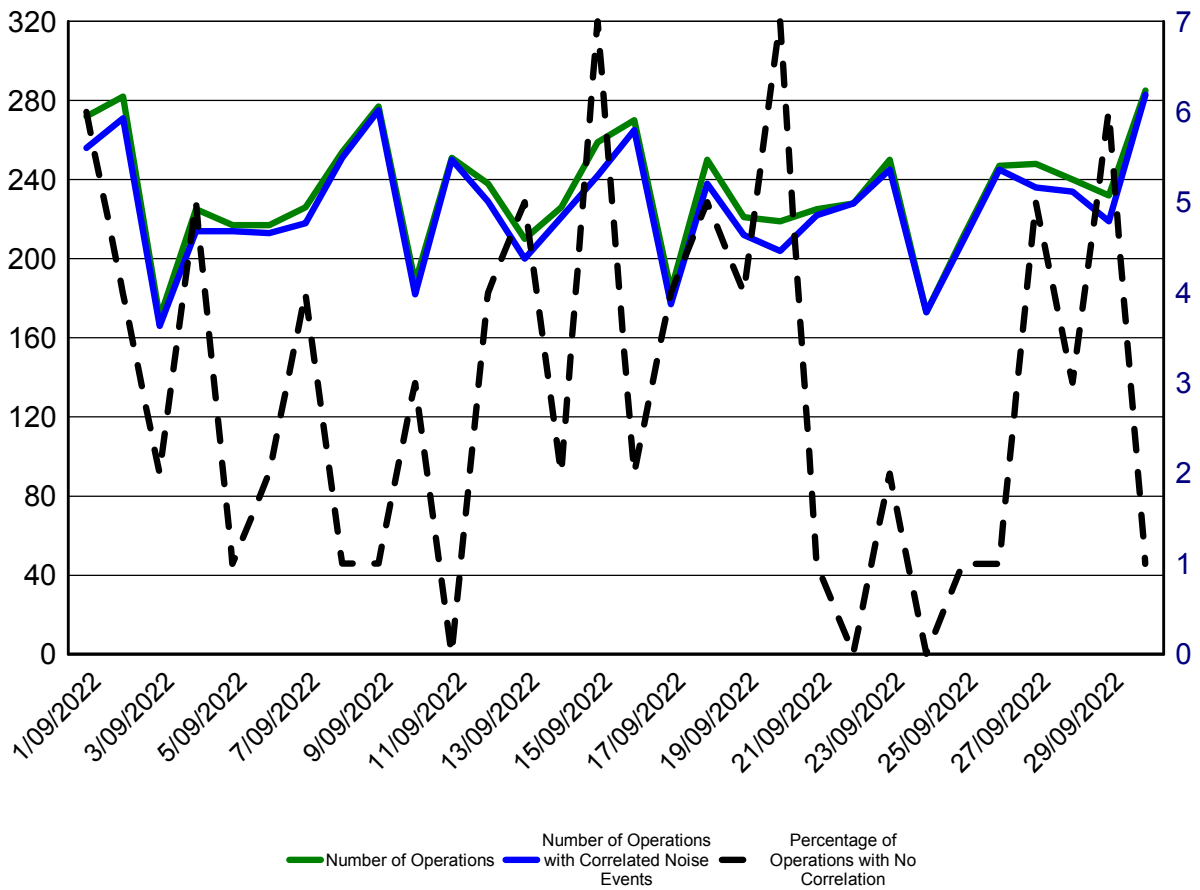
## Uncorrelated Aircraft

**Uncorrelated Aircraft Analysis**  
**Sep 1, 2022 to Sep 30, 2022**

Date	Number of Operations	Operations with Correlated Noise Events	Percentage of Operations With No Correlated Noise Events	Jets with No Correlated Noise Events
01-Sep-2022	272	256	6%	4
02-Sep-2022	282	271	4%	1
03-Sep-2022	170	166	2%	0
04-Sep-2022	225	214	5%	2
05-Sep-2022	217	214	1%	1
06-Sep-2022	217	213	2%	0
07-Sep-2022	226	218	4%	0
08-Sep-2022	254	251	1%	1
09-Sep-2022	277	275	1%	0
10-Sep-2022	188	182	3%	0
11-Sep-2022	251	250	0%	1
12-Sep-2022	238	229	4%	1
13-Sep-2022	210	200	5%	1
14-Sep-2022	226	221	2%	0
15-Sep-2022	259	242	7%	1
16-Sep-2022	270	265	2%	0
17-Sep-2022	184	177	4%	1
18-Sep-2022	250	238	5%	0
19-Sep-2022	221	212	4%	0
20-Sep-2022	219	204	7%	0
21-Sep-2022	225	222	1%	0
22-Sep-2022	228	228	0%	0
23-Sep-2022	250	245	2%	0
24-Sep-2022	173	173	0%	0
25-Sep-2022	211	209	1%	0
26-Sep-2022	247	245	1%	0
27-Sep-2022	248	236	5%	1
28-Sep-2022	240	234	3%	2
29-Sep-2022	232	219	6%	1
30-Sep-2022	285	283	1%	0

Wellington International Airport  
 Managed Noise Service  
 Monthly Report for Sep 2022

This graph shown below provides a summary of the noise correlation at Wellington Airport during September 2022



Wellington International Airport  
Managed Noise Service  
Monthly Report for Sep 2022

**Calibration Report**

	RMT 1			RMT 2			RMT 3		
	Measured	Diff.	Status	Measured	Diff.	Status	Measured	Diff.	Status
01-Sep-2022	88.1	0.0	SUCCESS	87.7	0.2	SUCCESS	88.0	0.0	SUCCESS
02-Sep-2022	88.1	0.0	SUCCESS	87.6	0.1	SUCCESS	88.0	0.0	SUCCESS
03-Sep-2022	88.1	0.0	SUCCESS	87.7	0.2	SUCCESS	88.0	0.0	SUCCESS
04-Sep-2022	88.1	0.0	SUCCESS	87.7	0.2	SUCCESS	88.1	0.1	SUCCESS
05-Sep-2022	88.0	-0.1	SUCCESS	87.6	0.1	SUCCESS	88.1	0.1	SUCCESS
06-Sep-2022	88.0	-0.1	SUCCESS	87.6	0.1	SUCCESS	88.1	0.1	SUCCESS
07-Sep-2022	88.1	0.0	SUCCESS	87.6	0.1	SUCCESS	88.0	0.0	SUCCESS
08-Sep-2022	88.0	-0.1	SUCCESS	87.6	0.1	SUCCESS	88.0	0.0	SUCCESS
09-Sep-2022	88.0	-0.1	SUCCESS	87.6	0.1	SUCCESS	88.0	0.0	SUCCESS
10-Sep-2022	88.1	0.0	SUCCESS	87.6	0.1	SUCCESS	88.0	0.0	SUCCESS
11-Sep-2022	88.0	-0.1	SUCCESS	87.6	0.1	SUCCESS	88.0	0.0	SUCCESS
12-Sep-2022	88.0	-0.1	SUCCESS	87.6	0.1	SUCCESS	88.0	0.0	SUCCESS
13-Sep-2022	88.1	0.0	SUCCESS	87.7	0.2	SUCCESS	88.0	0.0	SUCCESS
14-Sep-2022	88.1	0.0	SUCCESS	87.6	0.1	SUCCESS	88.1	0.1	SUCCESS
15-Sep-2022	88.1	0.0	SUCCESS	87.6	0.1	SUCCESS	88.0	0.0	SUCCESS
16-Sep-2022	88.0	-0.1	SUCCESS	87.6	0.1	SUCCESS	88.0	0.0	SUCCESS
17-Sep-2022	88.1	0.0	SUCCESS	87.6	0.1	SUCCESS	88.0	0.0	SUCCESS
18-Sep-2022	88.1	0.0	SUCCESS	87.6	0.1	SUCCESS	88.1	0.1	SUCCESS
19-Sep-2022	88.1	0.0	SUCCESS	87.6	0.1	SUCCESS	88.1	0.1	SUCCESS
20-Sep-2022	88.1	0.0	SUCCESS	87.6	0.1	SUCCESS	88.1	0.1	SUCCESS
21-Sep-2022	88.0	-0.1	SUCCESS	87.6	0.1	SUCCESS	88.0	0.0	SUCCESS
22-Sep-2022	88.0	-0.1	SUCCESS	87.6	0.1	SUCCESS	88.0	0.0	SUCCESS
23-Sep-2022	88.1	0.0	SUCCESS	87.6	0.1	SUCCESS	88.0	0.0	SUCCESS
24-Sep-2022	88.0	-0.1	SUCCESS	87.6	0.1	SUCCESS	88.0	0.0	SUCCESS
25-Sep-2022	88.1	0.0	SUCCESS	87.6	0.1	SUCCESS	88.0	0.0	SUCCESS
26-Sep-2022	88.1	0.0	SUCCESS	87.6	0.1	SUCCESS	88.0	0.0	SUCCESS
27-Sep-2022	88.1	0.0	SUCCESS	87.6	0.1	SUCCESS	88.0	0.0	SUCCESS
28-Sep-2022	88.1	0.0	SUCCESS	87.6	0.1	SUCCESS	88.0	0.0	SUCCESS
29-Sep-2022	88.1	0.0	SUCCESS	87.6	0.1	SUCCESS	88.0	0.0	SUCCESS
30-Sep-2022	88.1	0.0	SUCCESS	87.6	0.1	SUCCESS	88.0	0.0	SUCCESS



Wellington International Airport  
Managed Noise Service  
Monthly Report for Oct 2022

---

**WELLINGTON INTERNATIONAL**  
**AIRPORT LIMITED**

Managed Noise Service

Monthly Report: Oct 2022

Provided By: Envirosuite  
Date: 02 November, 2022



Wellington International Airport  
Managed Noise Service  
Monthly Report for Oct 2022

---

**Table of Contents**

<b>SUMMARY</b> .....	<b>3</b>
<b>AIRCRAFT LDN</b> .....	<b>4</b>
<b>AIRCRAFT OPERATIONS</b> .....	<b>5</b>
<b>UNCORRELATED AIRCRAFT</b> .....	<b>7</b>
<b>CALIBRATION REPORT</b> .....	<b>9</b>



Wellington International Airport  
Managed Noise Service  
Monthly Report for Oct 2022

---

## Summary

This report contains the information required by WIAL as part of the Envirosuite Managed Noise Service Agreement. The month of October saw data collected from all three RMTs .

Wellington International Airport  
 Managed Noise Service  
 Monthly Report for Oct 2022

## Aircraft LDN

**Daily LDN Table**  
**Oct 1, 2022 to Oct 31, 2022**

	<b>RMT 1 Rongotai</b>	<b>RMT 2 Maupuia</b>	<b>RMT 3 Kekerenga</b>
01-Oct-22	55.5	52.1	51.0
02-Oct-22	59.2	55.8	55.4
03-Oct-22	57.8	55.3	52.7
04-Oct-22	55.1	55.0	54.0
05-Oct-22	55.3	60.6	56.1
06-Oct-22	56.2	59.3	54.3
07-Oct-22	56.3	56.5	53.7
08-Oct-22	53.2	57.4	56.2
09-Oct-22	56.8	58.4	56.4
10-Oct-22	56.4	58.8	56.6
11-Oct-22	57.8	56.5	57.6
12-Oct-22	56.8	54.8	52.7
13-Oct-22	57.1	55.3	51.4
14-Oct-22	58.8	54.9	51.5
15-Oct-22	55.3	54.0	51.7
16-Oct-22	54.9	58.1	55.1
17-Oct-22	54.0	58.4	56.1
18-Oct-22	53.0	56.8	53.7
19-Oct-22	53.5	54.9	54.8
20-Oct-22	53.8	57.3	54.8
21-Oct-22	57.0	55.6	53.4
22-Oct-22	58.3	56.4	54.6
23-Oct-22	54.8	58.9	54.6
24-Oct-22	57.0	58.6	56.2
25-Oct-22	55.3	54.2	52.6
26-Oct-22	55.7	55.7	54.8
27-Oct-22	53.9	58.0	55.0
28-Oct-22	55.8	58.3	55.7
29-Oct-22	56.9	57.5	58.2
30-Oct-22	54.4	57.1	57.2
31-Oct-22	53.6	58.2	55.2

Wellington International Airport  
Managed Noise Service  
Monthly Report for Oct 2022

---

## Aircraft Operations

**Operations Analysis**  
Oct 1, 2022 to Oct 31, 2022

Operation Type	Day	Night	Total
Arrival	3471	111	3582
Departure	3369	175	3544
<b>Total</b>	<b>6840</b>	<b>286</b>	<b>7126</b>

Jet	Day	Night	Total
A20N	115	94	209
A21N	11	1	12
A320 - Airbus - A320	1747	29	1776
B38M	18	0	18
B738 - Boeing - 737-800	130	25	155
B752 - Boeing - 757-200	2	0	2
C25A	7	0	7
C25B	2	0	2
C510 - CESSNA CITIATION MUSTANG	24	0	24
C560 - Cessna - Citation 5	6	0	6
C680 - CESSNA - 680 Citation Sovereign L2J/M	2	0	2
F2TH - Dassault-Breguet - Falcon 2000	4	0	4
FA50 - Dassault-Breguet - Falcon 50, Mystere 50	5	0	5
(T-16)			
GLEX - Bombardier GLOBAL EXPRESS/Sentinel	4	0	4
GLF6	2	0	2
PC24	2	0	2
<b>Total</b>	<b>2081</b>	<b>149</b>	<b>2230</b>

Wellington International Airport  
Managed Noise Service  
Monthly Report for Oct 2022

<b>Turboprop</b>	<b>Day</b>	<b>Night</b>	<b>Total</b>
AT75 - Aerospatiale/Aeritalia - ATR-72-500	14	0	14
AT76 - Aerospatiale/Aeritalia - ATR-72-600	971	39	1010
B350 - Beech - Super King Air 350	50	0	50
BE20 - Beech - Super King Air 200, 1300	141	8	149
BE9L - Beech - KingAir90, A90 to E90 (T-44, V-C6), Taurus 90	62	1	63
C208 - Cessna - Caravan 1- 208,(Super) Cargomaster, Grand Caravan (U27)	579	42	621
C441 - Cessna - Conquest/Conquest 2 - 441	37	0	37
DH8C - Dehavilland - Dash 8, DHC8 - 300	1988	1	1989
JS32 - British Aerospace (BAe) - BAe-3200 Jetstream Super 31	135	12	147
MU2 - Mitsubishi - MU-2, Marquise, Solitaire	2	0	2
PC12 - Pilatus Flugzeugwerke Ag - PC-12	284	18	302
SF34 - Saab - SF-340	56	7	63
SW4 - Fairchild - Metro, Merlin 4	15	0	15
TEX2	1	0	1
<b>Total</b>	<b>4335</b>	<b>128</b>	<b>4463</b>

<b>Others</b>	<b>Day</b>	<b>Night</b>	<b>Total</b>
A109	1	0	1
BE36 - Beech - Bonanza 36	1	0	1
BK17	26	1	27
BN2P - Britten Norman - BN-2A/B Islander, Defender	2	0	2
C152 - Cessna - Cessna 152	2	0	2
C172 - Cessna - Skyhawk 172/Cutlass/Mescalero	20	0	20
C185 - Cessna - Skywagon 185 (U-17A/B)	2	0	2
C82R - Cessna - Skylane RG, Turbo Skylane RG, R182, TR182	6	0	6
DA40	6	0	6
EFOX	2	0	2
GA8	106	0	106
M9	6	0	6
P28A - Piper - Cherokee, Archer, Warrior, Cadet, Cruiser (PA-28-140/150/151/160/161/180/181)	41	1	42
P68 - Partenavia Construzioni Aeronautiche SpA - P68/B/C/-TC,Victor, Observer/P68R	1	0	1
PA34 - Piper - Seneca 2/3	19	0	19
PA38 - Piper - Tomahawk	57	0	57
PA46 - Piper - Malibu, Malibu Mirage	2	0	2
RV7	1	0	1
SW4B	16	0	16
TB20	2	0	2
	107	7	114
<b>Total</b>	<b>424</b>	<b>9</b>	<b>433</b>

<b>Category</b>	<b>Day</b>	<b>Night</b>	<b>Total</b>
Jet	2081	149	2230
Turboprop	4335	128	4463
Other	424	9	433
<b>Total</b>	<b>6840</b>	<b>286</b>	<b>7126</b>

Wellington International Airport  
Managed Noise Service  
Monthly Report for Oct 2022

---

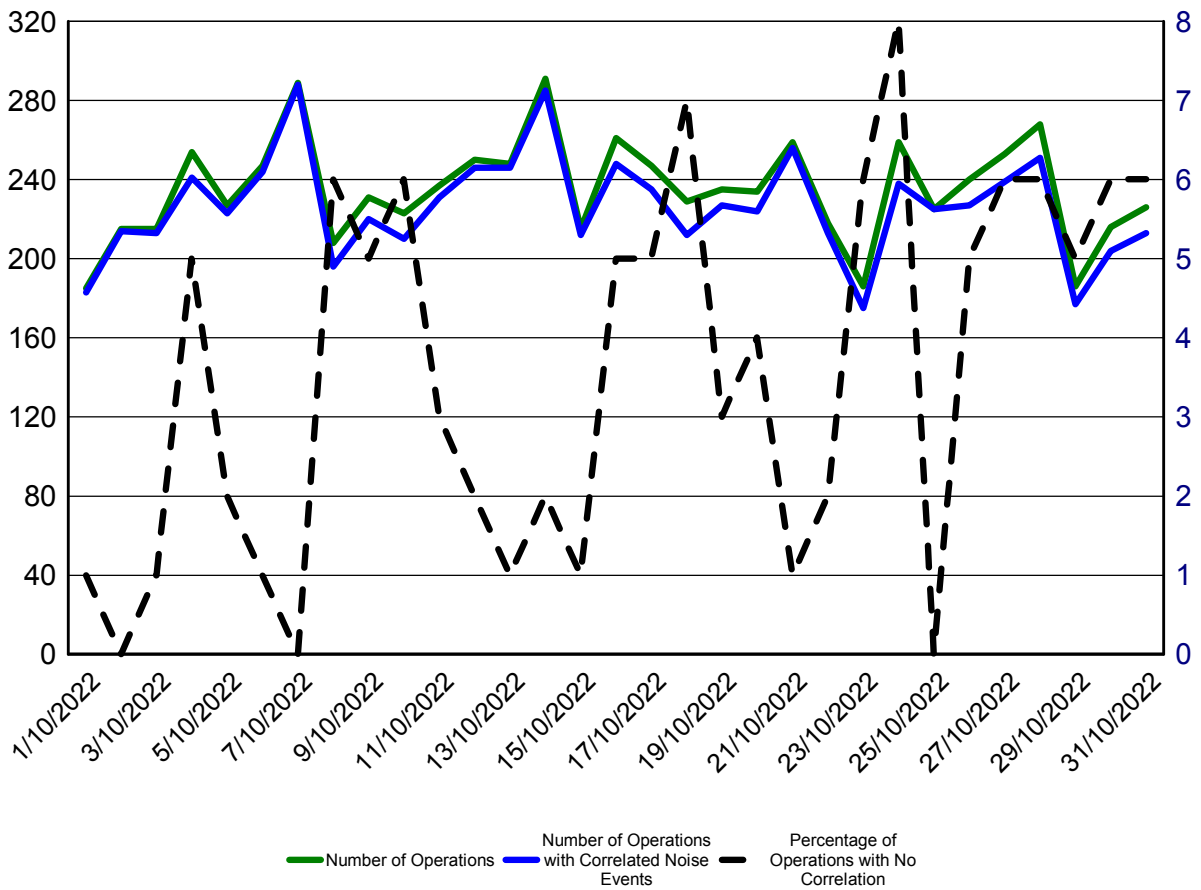
## Uncorrelated Aircraft

**Uncorrelated Aircraft Analysis**  
**Oct 1, 2022 to Oct 31, 2022**

Date	Number of Operations	Operations with Correlated Noise Events	Percentage of Operations With No Correlated Noise Events	Jets with No Correlated Noise Events
01-Oct-2022	185	183	1%	0
02-Oct-2022	215	214	0%	0
03-Oct-2022	215	213	1%	1
04-Oct-2022	254	241	5%	0
05-Oct-2022	227	223	2%	0
06-Oct-2022	247	244	1%	1
07-Oct-2022	289	288	0%	0
08-Oct-2022	208	196	6%	0
09-Oct-2022	231	220	5%	1
10-Oct-2022	223	210	6%	1
11-Oct-2022	237	231	3%	0
12-Oct-2022	250	246	2%	1
13-Oct-2022	248	246	1%	0
14-Oct-2022	291	285	2%	1
15-Oct-2022	215	212	1%	0
16-Oct-2022	261	248	5%	3
17-Oct-2022	247	235	5%	1
18-Oct-2022	229	212	7%	1
19-Oct-2022	235	227	3%	0
20-Oct-2022	234	224	4%	1
21-Oct-2022	259	256	1%	1
22-Oct-2022	218	213	2%	0
23-Oct-2022	186	175	6%	1
24-Oct-2022	259	238	8%	2
25-Oct-2022	225	225	0%	0
26-Oct-2022	240	227	5%	0
27-Oct-2022	253	239	6%	2
28-Oct-2022	268	251	6%	1
29-Oct-2022	186	177	5%	4
30-Oct-2022	216	204	6%	3
31-Oct-2022	226	213	6%	0

Wellington International Airport  
 Managed Noise Service  
 Monthly Report for Oct 2022

This graph shown below provides a summary of the noise correlation at Wellington Airport during October 2022



Wellington International Airport  
Managed Noise Service  
Monthly Report for Oct 2022

**Calibration Report**

	RMT 1			RMT 2			RMT 3		
	Measured	Diff.	Status	Measured	Diff.	Status	Measured	Diff.	Status
01-Oct-2022	88.0	-0.1	SUCCESS	87.6	0.1	SUCCESS	88.0	0.0	SUCCESS
02-Oct-2022	88.0	-0.1	SUCCESS	87.6	0.1	SUCCESS	88.0	0.0	SUCCESS
03-Oct-2022	88.0	-0.1	SUCCESS	87.6	0.1	SUCCESS	88.0	0.0	SUCCESS
04-Oct-2022	88.1	0.0	SUCCESS	87.6	0.1	SUCCESS	88.0	0.0	SUCCESS
05-Oct-2022	88.1	0.0	SUCCESS	87.7	0.2	SUCCESS	88.0	0.0	SUCCESS
06-Oct-2022	88.0	-0.1	SUCCESS	87.6	0.1	SUCCESS	88.0	0.0	SUCCESS
07-Oct-2022	88.0	-0.1	SUCCESS	87.6	0.1	SUCCESS	88.0	0.0	SUCCESS
08-Oct-2022	88.1	0.0	SUCCESS	87.6	0.1	SUCCESS	88.0	0.0	SUCCESS
09-Oct-2022	88.1	0.0	SUCCESS	87.7	0.2	SUCCESS	88.0	0.0	SUCCESS
10-Oct-2022	88.1	0.0	SUCCESS	87.7	0.2	SUCCESS	88.1	0.1	SUCCESS
11-Oct-2022	88.1	0.0	SUCCESS	87.8	0.3	SUCCESS	88.0	0.0	SUCCESS
12-Oct-2022	88.1	0.0	SUCCESS	87.6	0.1	SUCCESS	88.0	0.0	SUCCESS
13-Oct-2022	88.0	-0.1	SUCCESS	87.6	0.1	SUCCESS	88.0	0.0	SUCCESS
14-Oct-2022	88.0	-0.1	SUCCESS	87.6	0.1	SUCCESS	88.0	0.0	SUCCESS
15-Oct-2022	88.1	0.0	SUCCESS	87.6	0.1	SUCCESS	88.0	0.0	SUCCESS
16-Oct-2022	88.1	0.0	SUCCESS	87.6	0.1	SUCCESS	88.0	0.0	SUCCESS
17-Oct-2022	88.1	0.0	SUCCESS	87.6	0.1	SUCCESS	88.0	0.0	SUCCESS
18-Oct-2022	88.1	0.0	SUCCESS	87.7	0.2	SUCCESS	88.0	0.0	SUCCESS
19-Oct-2022	88.1	0.0	SUCCESS	87.6	0.1	SUCCESS	88.0	0.0	SUCCESS
20-Oct-2022	88.1	0.0	SUCCESS	87.7	0.2	SUCCESS	88.0	0.0	SUCCESS
21-Oct-2022	88.1	0.0	SUCCESS	87.6	0.1	SUCCESS	88.1	0.1	SUCCESS
22-Oct-2022	88.1	0.0	SUCCESS	87.6	0.1	SUCCESS	88.0	0.0	SUCCESS
23-Oct-2022	88.1	0.0	SUCCESS	87.6	0.1	SUCCESS	88.0	0.0	SUCCESS
24-Oct-2022	88.1	0.0	SUCCESS	87.6	0.1	SUCCESS	88.1	0.1	SUCCESS
25-Oct-2022	88.0	-0.1	SUCCESS	87.6	0.1	SUCCESS	88.0	0.0	SUCCESS
26-Oct-2022	88.1	0.0	SUCCESS	87.7	0.2	SUCCESS	88.1	0.1	SUCCESS
27-Oct-2022	88.1	0.0	SUCCESS	87.7	0.2	SUCCESS	88.1	0.1	SUCCESS
28-Oct-2022	88.1	0.0	SUCCESS	87.6	0.1	SUCCESS	88.1	0.1	SUCCESS
29-Oct-2022	88.2	0.1	SUCCESS	87.8	0.3	SUCCESS	88.1	0.1	SUCCESS
30-Oct-2022	88.1	0.0	SUCCESS	87.8	0.3	SUCCESS	88.0	0.0	SUCCESS
31-Oct-2022	88.1	0.0	SUCCESS	87.6	0.1	SUCCESS	88.0	0.0	SUCCESS



Wellington International Airport  
Managed Noise Service  
Monthly Report for Nov 2022

---

**WELLINGTON INTERNATIONAL**  
**AIRPORT LIMITED**

Managed Noise Service

Monthly Report: Nov 2022

Provided By: Envirosuite  
Date: 01 December, 2022





Wellington International Airport  
Managed Noise Service  
Monthly Report for Nov 2022

---

**Table of Contents**

<b>SUMMARY</b> .....	<b>3</b>
<b>AIRCRAFT LDN</b> .....	<b>4</b>
<b>AIRCRAFT OPERATIONS</b> .....	<b>5</b>
<b>UNCORRELATED AIRCRAFT</b> .....	<b>7</b>
<b>CALIBRATION REPORT</b> .....	<b>9</b>

Wellington International Airport  
Managed Noise Service  
Monthly Report for Nov 2022

---

## Summary

This report contains the information required by WIAL as part of the EnviroSuite Managed Noise Service Agreement. The month of November saw data collected from all three monitors.

Wellington International Airport  
Managed Noise Service  
Monthly Report for Nov 2022

## Aircraft LDN

**Daily LDN Table**  
**Nov 1, 2022 to Nov 30, 2022**

	<b>RMT 1 Rongotai</b>	<b>RMT 2 Maupuia</b>	<b>RMT 3 Kekerenga</b>
01-Nov-22	55.6	56.5	56.0
02-Nov-22	58.7	58.4	59.1
03-Nov-22	58.9	56.9	58.4
04-Nov-22	55.8	59.4	56.9
05-Nov-22	56.6	56.7	53.4
06-Nov-22	52.0	54.5	52.5
07-Nov-22	54.6	57.7	55.3
08-Nov-22	55.5	56.9	54.1
09-Nov-22	54.0	57.4	54.9
10-Nov-22	57.9	55.9	54.0
11-Nov-22	57.1	56.8	54.4
12-Nov-22	54.1	57.9	54.0
13-Nov-22	53.2	58.7	56.8
14-Nov-22	55.5	54.2	53.4
15-Nov-22	52.6	57.3	53.4
16-Nov-22	53.9	58.5	54.8
17-Nov-22	53.4	59.1	56.9
18-Nov-22	53.8	58.1	57.7
19-Nov-22	52.0	57.7	56.3
20-Nov-22	54.8	58.5	59.3
21-Nov-22	55.8	54.3	56.3
22-Nov-22	55.5	58.0	57.1
23-Nov-22	53.6	56.4	55.4
24-Nov-22	55.9	57.6	57.2
25-Nov-22	54.0	57.7	55.4
26-Nov-22	52.7	60.2	55.4
27-Nov-22	54.0	59.2	56.4
28-Nov-22	56.4	56.8	55.3
29-Nov-22	56.3	58.2	56.9
30-Nov-22	57.2	57.9	57.3

Wellington International Airport  
Managed Noise Service  
Monthly Report for Nov 2022

---

## Aircraft Operations

**Operations Analysis**  
**Nov 1, 2022 to Nov 30, 2022**

Operation Type	Day	Night	Total
Arrival	3265	97	3362
Departure	3149	176	3325
<b>Total</b>	<b>6414</b>	<b>273</b>	<b>6687</b>

Jet	Day	Night	Total
A20N	137	43	180
A21N	88	0	88
A320 - Airbus - A320	1786	30	1816
B38M	18	0	18
B737 - Boeing - 737-700	4	0	4
B738 - Boeing - 737-800	127	53	180
B752 - Boeing - 757-200	4	0	4
C25A	10	0	10
C25B	4	0	4
C510 - CESSNA CITIATION MUSTANG	40	0	40
C680 - CESSNA - 680 Citation Sovereign L2J/M	2	0	2
CL60 - Canadair Bombardier - CL600/610 Challenger	14	0	14
FA20 - Dassault-Breguet - Falcon 20, Mystere 20	2	0	2
(T-11)			
FA50 - Dassault-Breguet - Falcon 50, Mystere 50	19	0	19
(T-16)			
GLEX - Bombardier GLOBAL EXPRESS/Sentinel	2	0	2
GLF5 - Gulfstream - Gulfstream 5	7	1	8
GLF6	2	0	2
<b>Total</b>	<b>2266</b>	<b>127</b>	<b>2393</b>

Wellington International Airport  
Managed Noise Service  
Monthly Report for Nov 2022

<b>Turboprop</b>	<b>Day</b>	<b>Night</b>	<b>Total</b>
A400	2	0	2
AT75 - Aerospatiale/Aeritalia - ATR-72-500	16	0	16
AT76 - Aerospatiale/Aeritalia - ATR-72-600	560	41	601
B350 - Beech - Super King Air 350	27	3	30
BE20 - Beech - Super King Air 200, 1300	174	12	186
BE9L - Beech - KingAir90, A90 to E90 (T-44, V-C6), Taurus 90	36	4	40
C130 - Lockheed - Hercules, Spectre	14	0	14
C208 - Cessna - Caravan 1- 208,(Super) Cargomaster, Grand Caravan (U27)	560	42	602
C441 - Cessna - Conquest/Conquest 2 - 441	28	0	28
DH8C - Dehavilland - Dash 8, DHC8 - 300	1857	0	1857
JS31 - British Aerospace (BAe) - BAe-3100 Jetstream 31	6	0	6
JS32 - British Aerospace (BAe) - BAe-3200 Jetstream Super 31	126	15	141
PC12 - Pilatus Flugzeugwerke Ag - PC-12	278	14	292
SF34 - Saab - SF-340	53	0	53
SW4 - Fairchild - Metro, Merlin 4	6	0	6
<b>Total</b>	<b>3743</b>	<b>131</b>	<b>3874</b>

<b>Others</b>	<b>Day</b>	<b>Night</b>	<b>Total</b>
AS50	2	0	2
BE36 - Beech - Bonanza 36	1	0	1
BK17	16	1	17
BN2	1	0	1
BN2B	2	0	2
BN2P - Britten Norman - BN-2A/B Islander, Defender	9	0	9
C172 - Cessna - Skyhawk 172/Cutlass/Mescalero	26	0	26
C206 - Cessna - Stationair 6, Turbo Stationair 6	3	0	3
C402 - Cessna - Cessna 401, 402, Utiliner, Businessliner	2	0	2
EC30	5	1	6
GA8	62	0	62
JS3A - British Aerospace (BAe) - Jetstream 3	2	0	2
M9	2	0	2
NH90 - NH90 Caiman	10	2	12
P28A - Piper - Cherokee, Archer, Warrior, Cadet, Cruiser (PA-28-140/150/151/160/161/180/181)	33	2	35
P32R - Piper - Cherokee Lance PA-32R, Saratoga SP, Turbo Saratoga SP	2	0	2
PA34 - Piper - Seneca 2/3	18	0	18
PA38 - Piper - Tomahawk	72	0	72
SW4B	37	0	37
T206	2	0	2
	98	9	107
<b>Total</b>	<b>405</b>	<b>15</b>	<b>420</b>

<b>Category</b>	<b>Day</b>	<b>Night</b>	<b>Total</b>
Jet	2266	127	2393
Turboprop	3743	131	3874
Other	405	15	420
<b>Total</b>	<b>6414</b>	<b>273</b>	<b>6687</b>

Wellington International Airport  
Managed Noise Service  
Monthly Report for Nov 2022

---

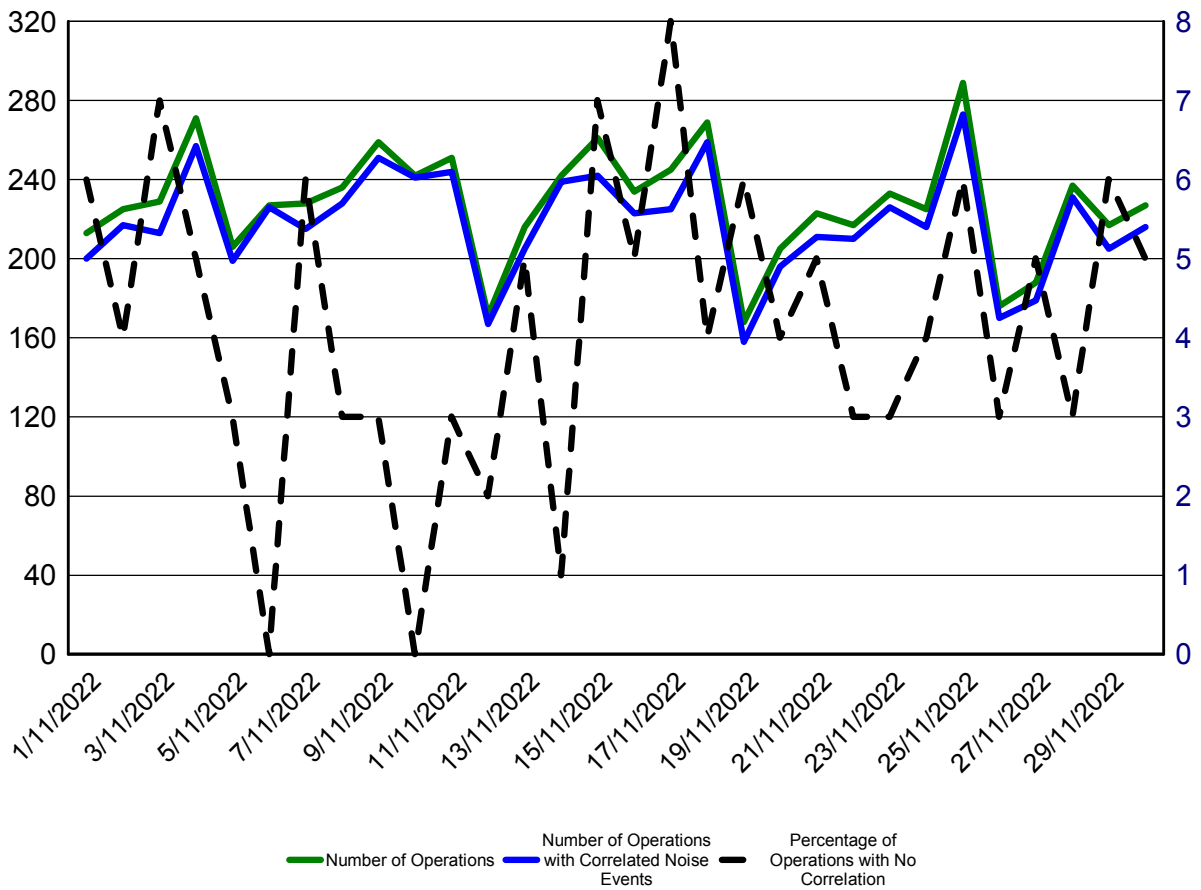
## Uncorrelated Aircraft

**Uncorrelated Aircraft Analysis**  
**Nov 1, 2022 to Nov 30, 2022**

Date	Number of Operations	Operations with Correlated Noise Events	Percentage of Operations With No Correlated Noise Events	Jets with No Correlated Noise Events
01-Nov-2022	213	200	6%	1
02-Nov-2022	225	217	4%	2
03-Nov-2022	229	213	7%	2
04-Nov-2022	271	257	5%	1
05-Nov-2022	206	199	3%	0
06-Nov-2022	227	226	0%	0
07-Nov-2022	228	215	6%	2
08-Nov-2022	236	228	3%	0
09-Nov-2022	259	251	3%	0
10-Nov-2022	242	241	0%	0
11-Nov-2022	251	244	3%	0
12-Nov-2022	171	167	2%	0
13-Nov-2022	216	205	5%	1
14-Nov-2022	242	239	1%	0
15-Nov-2022	261	242	7%	3
16-Nov-2022	234	223	5%	1
17-Nov-2022	245	225	8%	4
18-Nov-2022	269	259	4%	3
19-Nov-2022	168	158	6%	1
20-Nov-2022	205	196	4%	1
21-Nov-2022	223	211	5%	2
22-Nov-2022	217	210	3%	1
23-Nov-2022	233	226	3%	2
24-Nov-2022	225	216	4%	1
25-Nov-2022	289	273	6%	1
26-Nov-2022	176	170	3%	0
27-Nov-2022	188	179	5%	0
28-Nov-2022	237	231	3%	1
29-Nov-2022	217	205	6%	1
30-Nov-2022	227	216	5%	2

Wellington International Airport  
 Managed Noise Service  
 Monthly Report for Nov 2022

This graph shown below provides a summary of the noise correlation at Wellington Airport during November 2022



Wellington International Airport  
Managed Noise Service  
Monthly Report for Nov 2022

### Calibration Report

	RMT 1			RMT 2			RMT 3		
	Measured	Diff.	Status	Measured	Diff.	Status	Measured	Diff.	Status
01-Nov-2022	88.1	0.0	SUCCESS	87.7	0.2	SUCCESS	88.1	0.1	SUCCESS
02-Nov-2022	88.1	0.0	SUCCESS	87.7	0.2	SUCCESS	88.0	0.0	SUCCESS
03-Nov-2022	88.1	0.0	SUCCESS	87.7	0.2	SUCCESS	88.0	0.0	SUCCESS
04-Nov-2022	88.1	0.0	SUCCESS	87.7	0.2	SUCCESS	88.1	0.1	SUCCESS
05-Nov-2022	88.1	0.0	SUCCESS	87.7	0.2	SUCCESS	88.1	0.1	SUCCESS
06-Nov-2022	88.1	0.0	SUCCESS	87.6	0.1	SUCCESS	88.1	0.1	SUCCESS
07-Nov-2022	88.1	0.0	SUCCESS	87.7	0.2	SUCCESS	88.1	0.1	SUCCESS
08-Nov-2022	88.1	0.0	SUCCESS	87.6	0.1	SUCCESS	88.1	0.1	SUCCESS
09-Nov-2022	88.1	0.0	SUCCESS	87.6	0.1	SUCCESS	88.0	0.0	SUCCESS
10-Nov-2022	88.1	0.0	SUCCESS	87.6	0.1	SUCCESS	88.0	0.0	SUCCESS
11-Nov-2022	88.1	0.0	SUCCESS	87.6	0.1	SUCCESS	88.0	0.0	SUCCESS
12-Nov-2022	88.1	0.0	SUCCESS	87.6	0.1	SUCCESS	88.0	0.0	SUCCESS
13-Nov-2022	88.1	0.0	SUCCESS	87.6	0.1	SUCCESS	88.0	0.0	SUCCESS
14-Nov-2022	88.1	0.0	SUCCESS	87.6	0.1	SUCCESS	88.0	0.0	SUCCESS
15-Nov-2022	88.1	0.0	SUCCESS	87.6	0.1	SUCCESS	88.0	0.0	SUCCESS
16-Nov-2022	88.1	0.0	SUCCESS	87.6	0.1	SUCCESS	88.0	0.0	SUCCESS
17-Nov-2022	88.1	0.0	SUCCESS	87.6	0.1	SUCCESS	88.0	0.0	SUCCESS
18-Nov-2022	88.1	0.0	SUCCESS	87.6	0.1	SUCCESS	88.0	0.0	SUCCESS
19-Nov-2022	88.1	0.0	SUCCESS	87.6	0.1	SUCCESS	88.0	0.0	SUCCESS
20-Nov-2022	88.1	0.0	SUCCESS	87.6	0.1	SUCCESS	88.0	0.0	SUCCESS
21-Nov-2022	88.1	0.0	SUCCESS	87.7	0.2	SUCCESS	88.0	0.0	SUCCESS
22-Nov-2022	88.1	0.0	SUCCESS	87.8	0.3	SUCCESS	88.0	0.0	SUCCESS
23-Nov-2022	88.1	0.0	SUCCESS	87.7	0.2	SUCCESS	88.0	0.0	SUCCESS
24-Nov-2022	88.1	0.0	SUCCESS	87.7	0.2	SUCCESS	88.0	0.0	SUCCESS
25-Nov-2022	88.1	0.0	SUCCESS	87.6	0.1	SUCCESS	88.0	0.0	SUCCESS
26-Nov-2022	88.1	0.0	SUCCESS	87.6	0.1	SUCCESS	88.1	0.1	SUCCESS
27-Nov-2022	88.1	0.0	SUCCESS	87.6	0.1	SUCCESS	88.1	0.1	SUCCESS
28-Nov-2022	88.1	0.0	SUCCESS	87.6	0.1	SUCCESS	88.0	0.0	SUCCESS
29-Nov-2022	88.1	0.0	SUCCESS	87.7	0.2	SUCCESS	88.1	0.1	SUCCESS
30-Nov-2022	88.1	0.0	SUCCESS	87.7	0.2	SUCCESS	88.0	0.0	SUCCESS